



SSO using ADFS

ESSENTIALS

Instructions for setting up single sign-on using Active Directory Federation Services.

Contents

- Introduction..... 3
- Configuration..... 3
- Finalizing the configuration 14
- Signing in using SSO 15

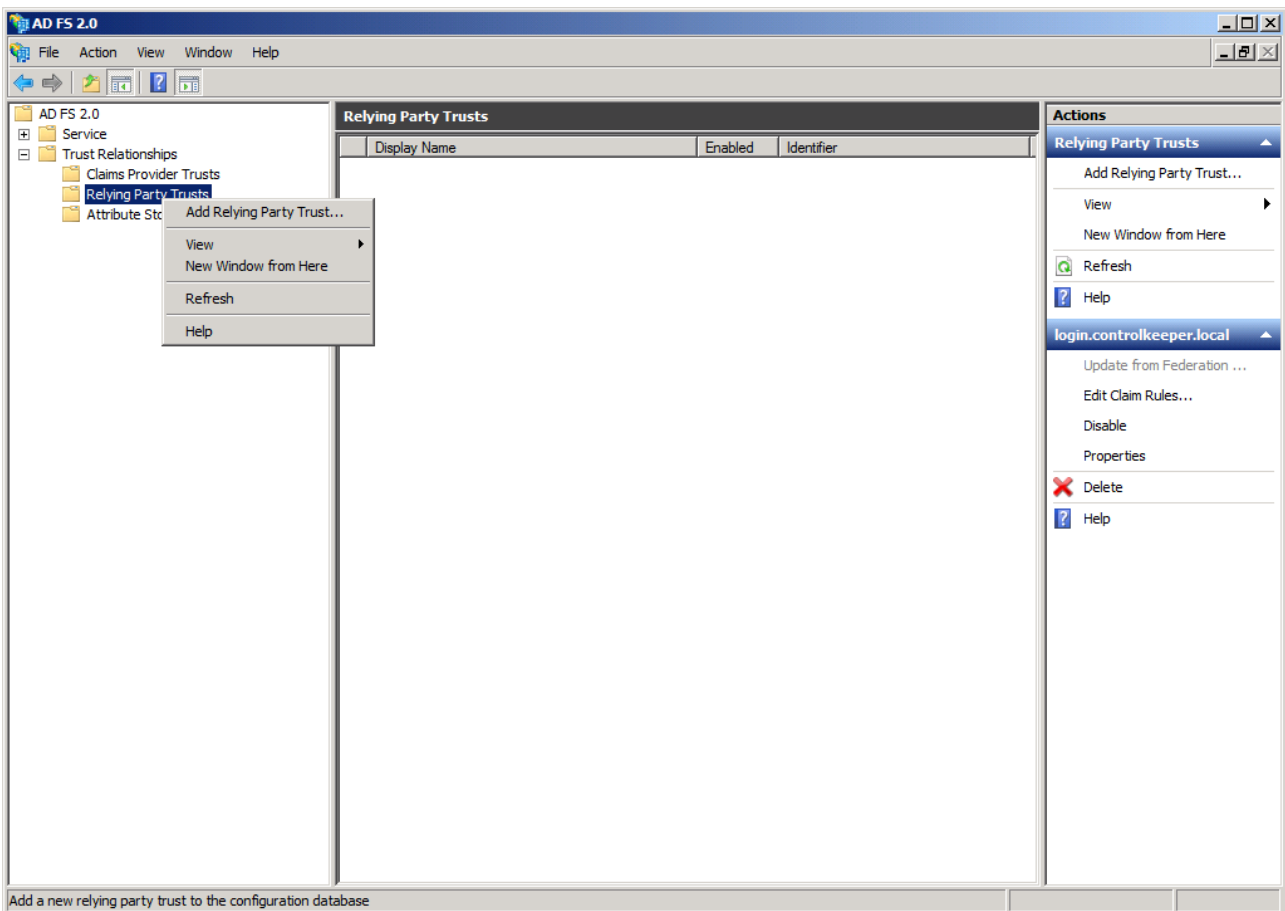
Introduction

This document describes the process of setting up single sign-on (SSO) for Essentials using ADFS. To use SSO on your Essentials account must be SSO enabled. To do that you can contact support@questback.com.

To simplify implementation we recommend that all users on the Essentials account use their organizational email address as username.

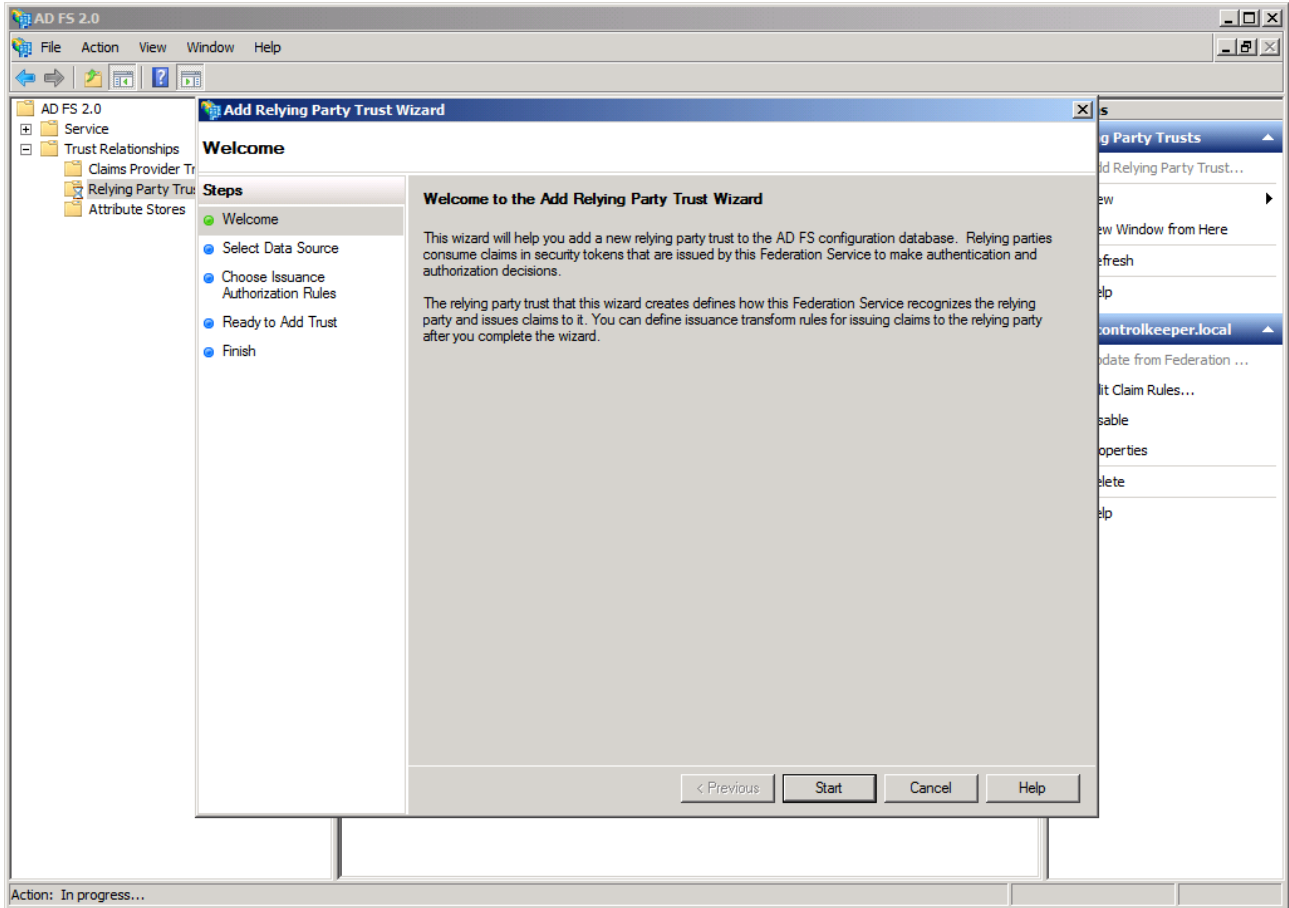
Configuration

You need to add Essentials as a relying party trust in the ADFS Manager.



This opens the relying party trust wizard.

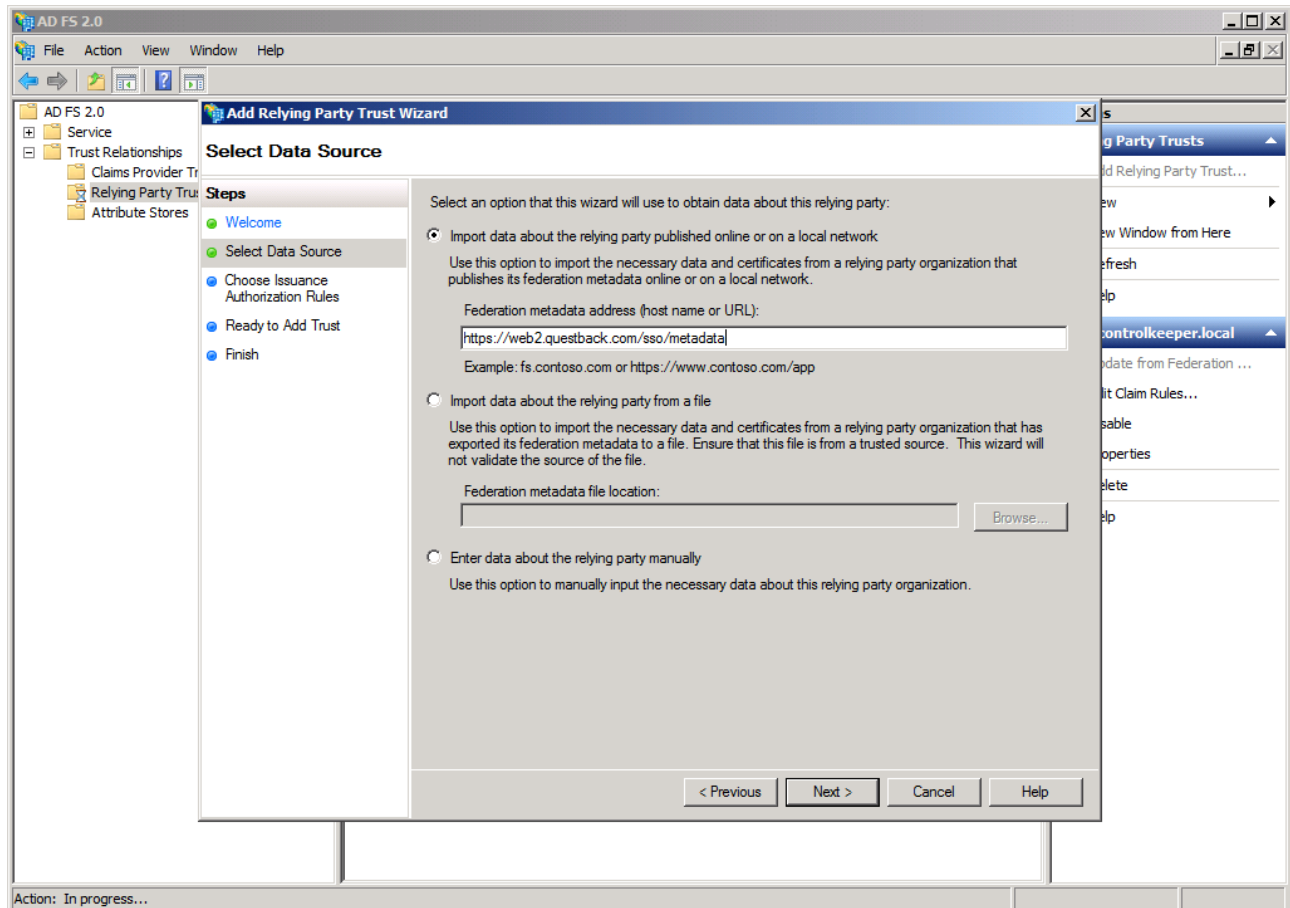
Just click Start.



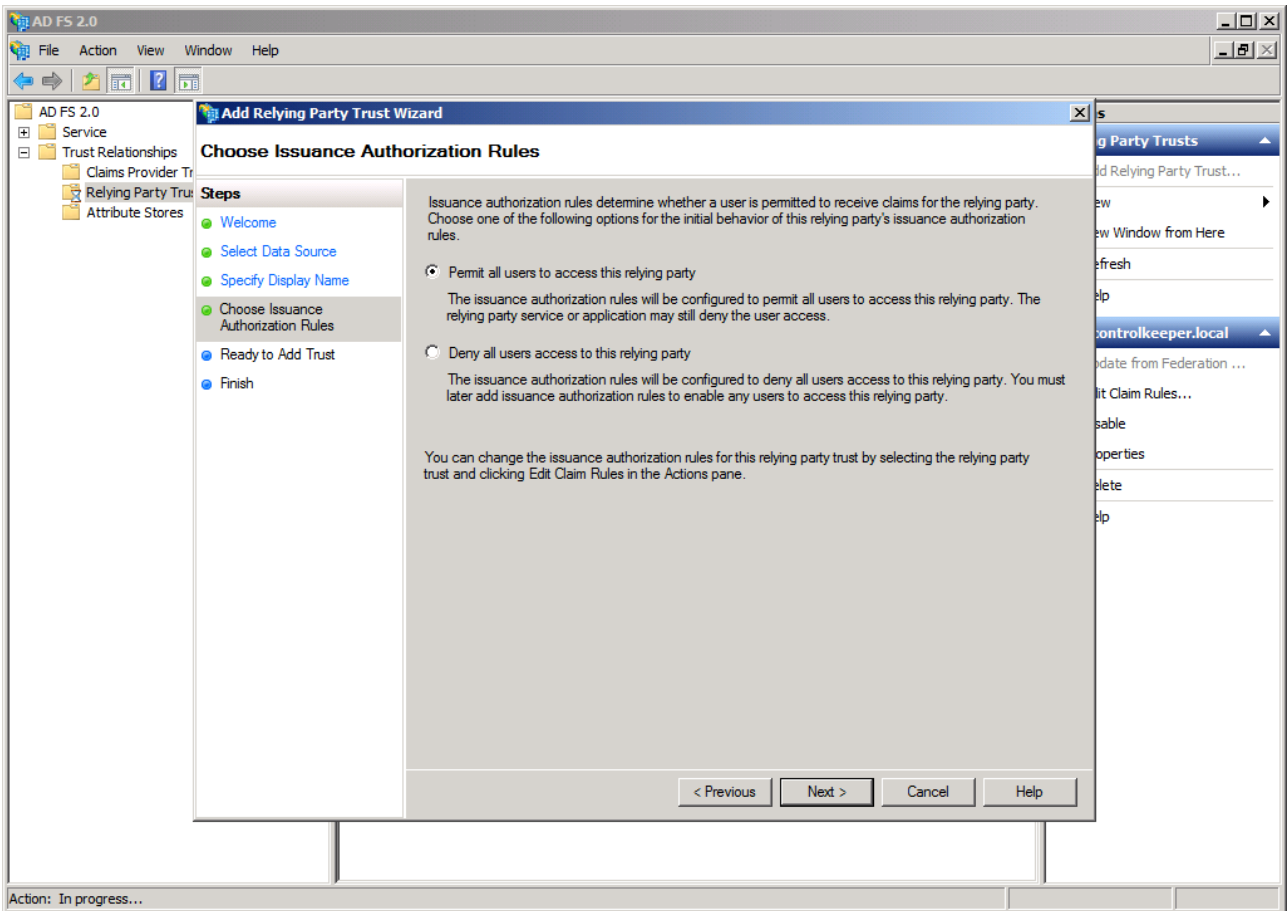
Select the Import data about the relying party published online or on a local network

Then enter our metadata url: <https://web2.questback.com/sso/metadata>

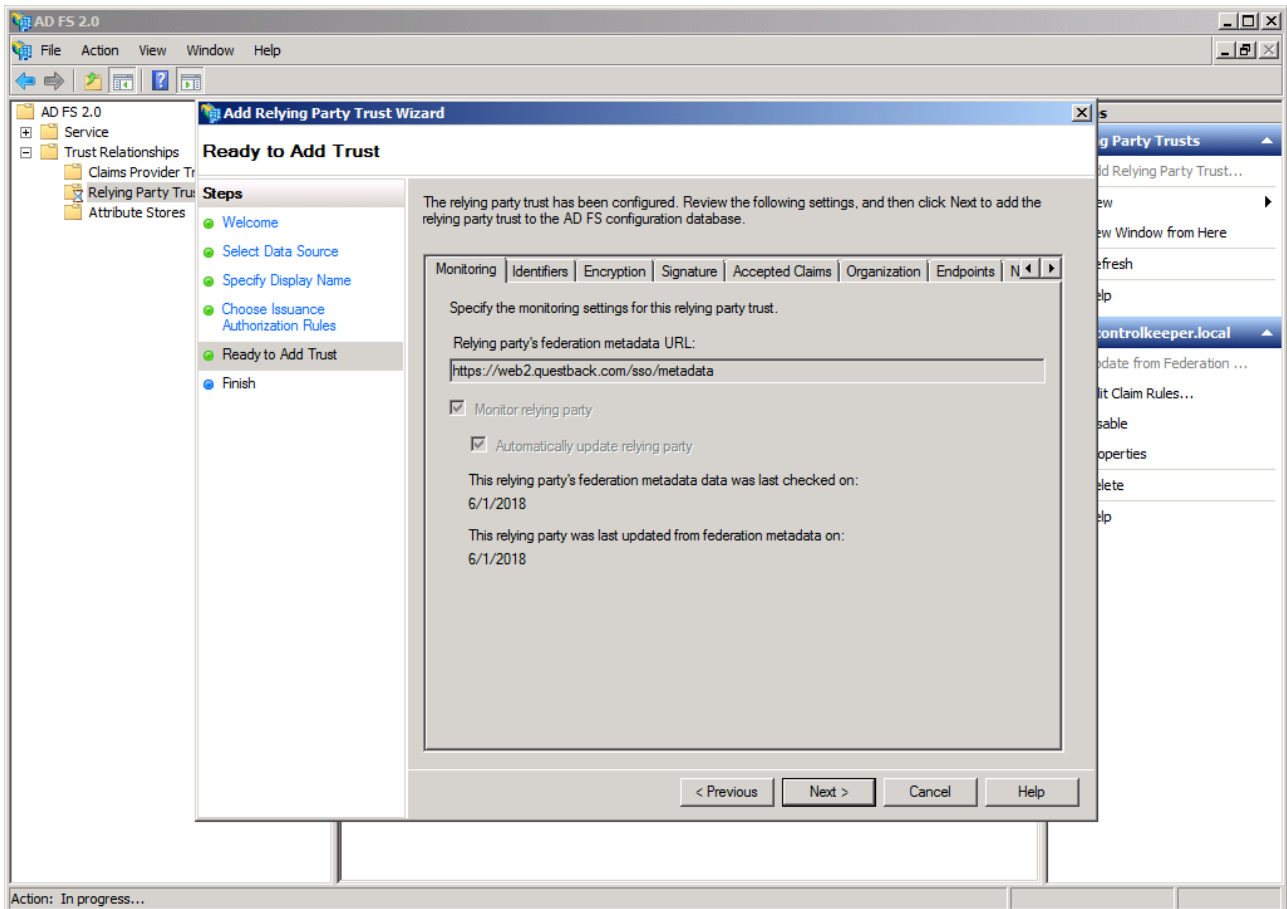
Click Next.



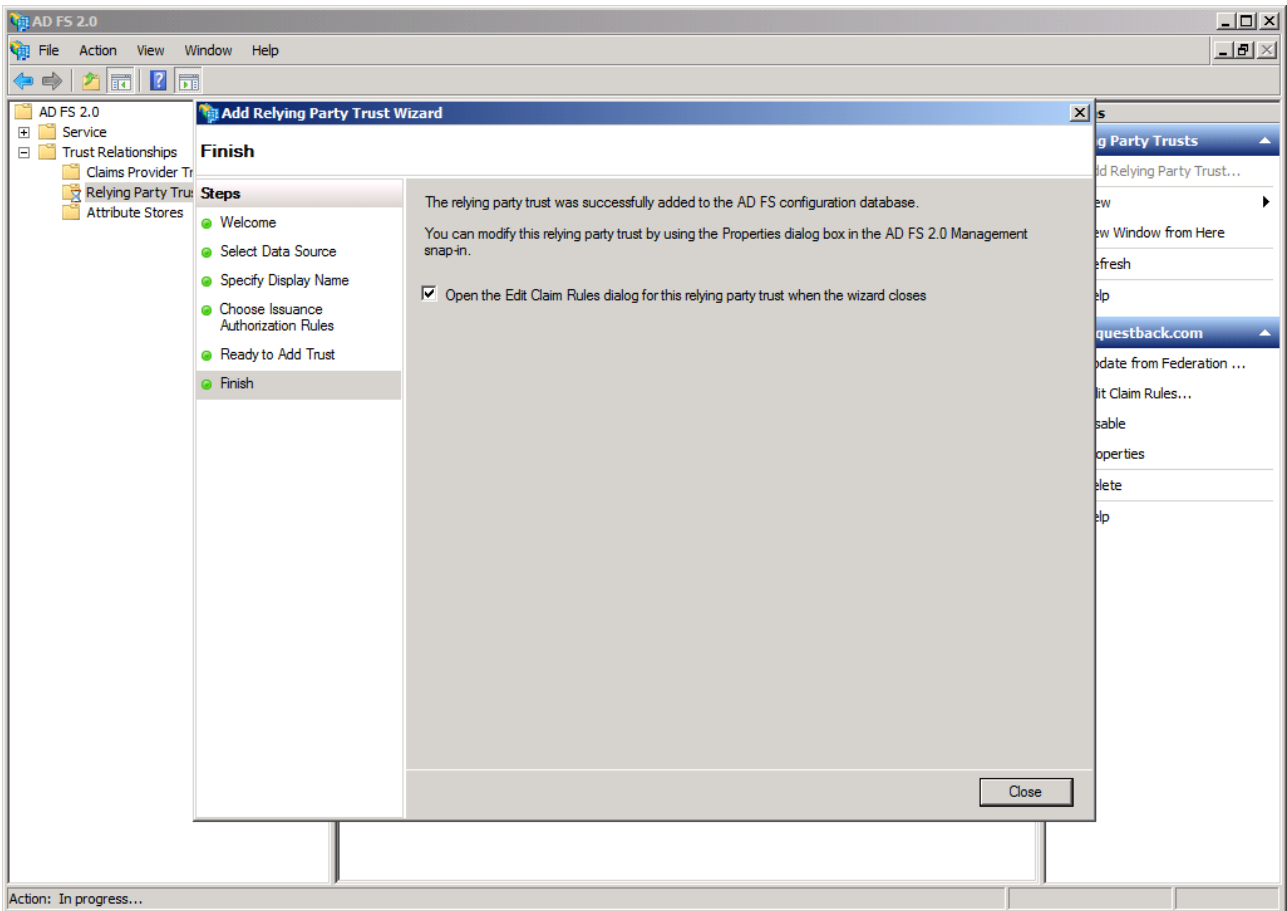
Select permissions to this relying party and click Next.



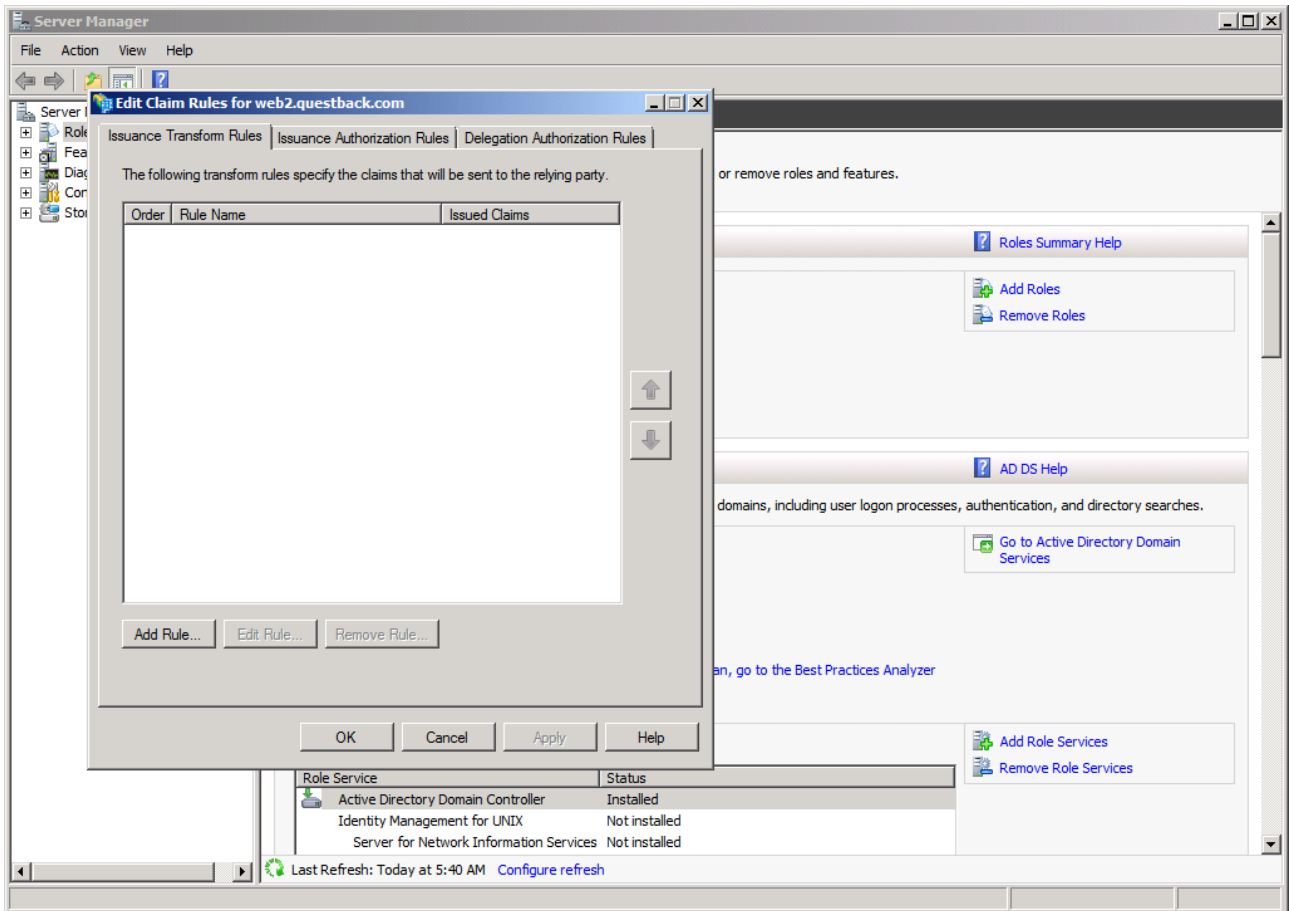
On the Ready to add trust page, just click Next.



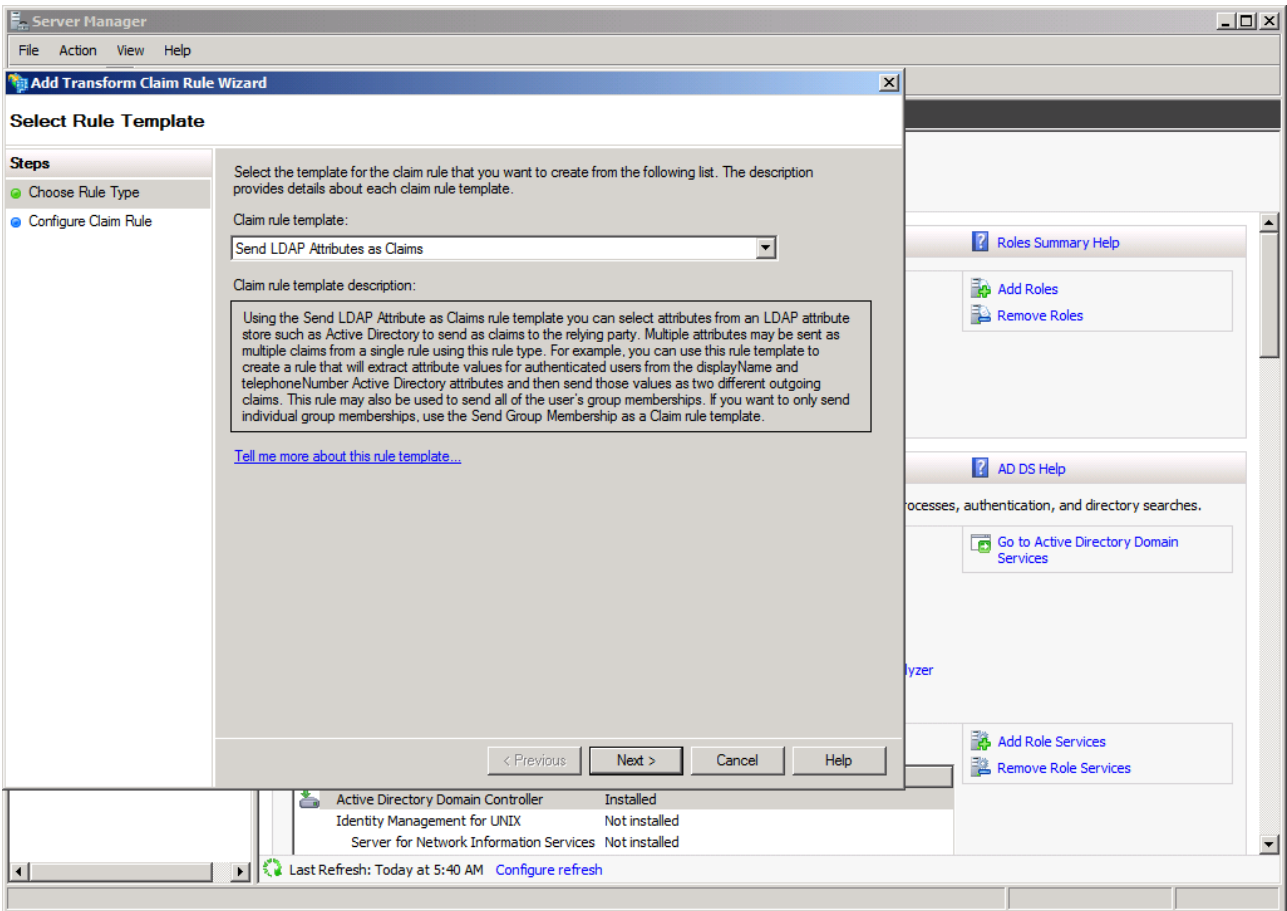
The trust has now been created and we can move on to creating the claim rules. Just click Close.



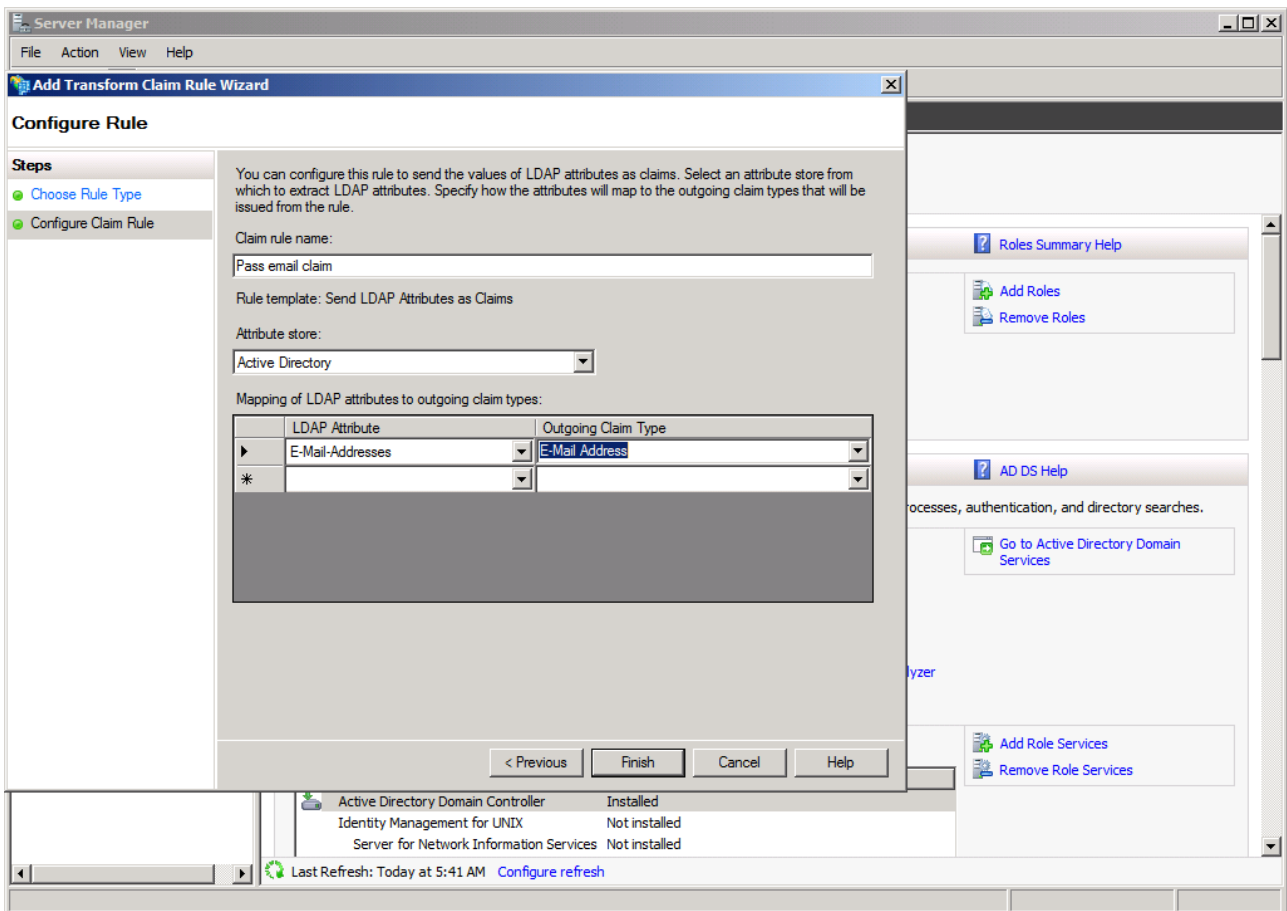
This opens the claim rules dialogue. Click Add Rule to create the first rule.



Select the template Send LDAP Attributes as Claims.

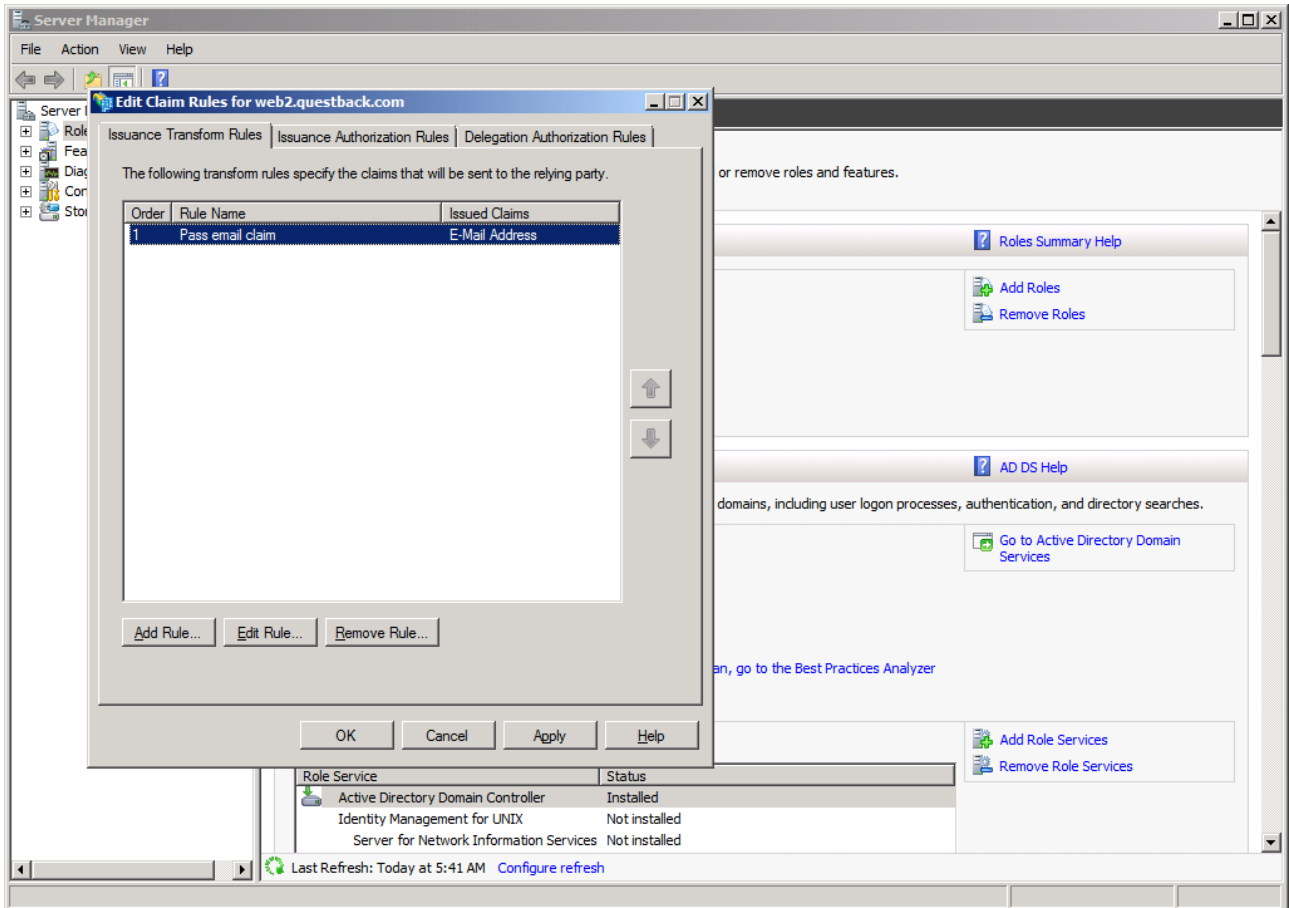


Enter a name, select your attribute store and then map LDAP Email Addresses to the outgoing claim Email Address.

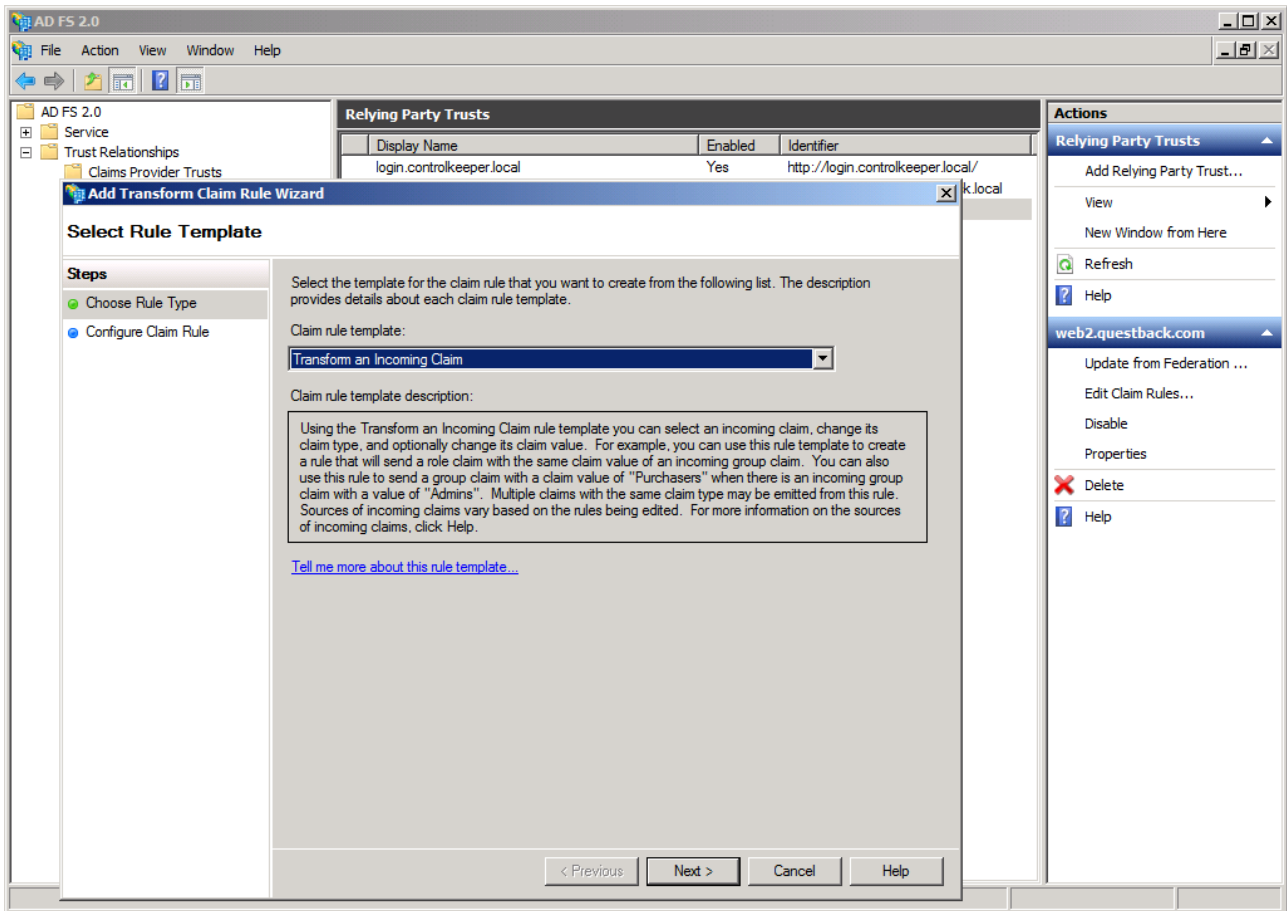


Now we need to create a second rule.

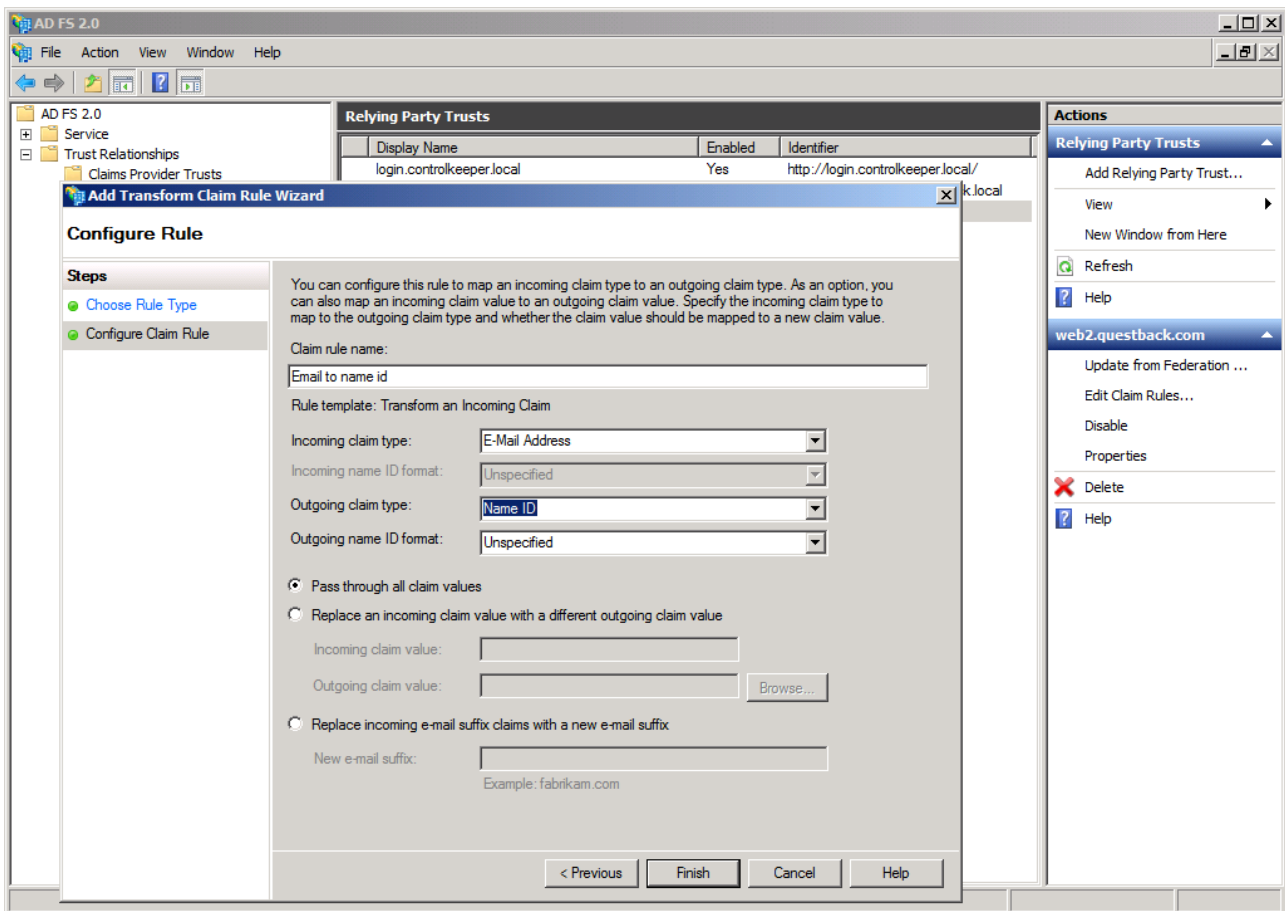
Click Add Rule.



Select the template Transform an Incoming Claim.



Enter a name, then select Email Address as Incoming claim type and Name ID as Outgoing claim type.



Then click Finish.

Finalizing the configuration

Now your account needs to be configured in Essentials. Please send the metadata url of your ADFS installation to support@questback.com.

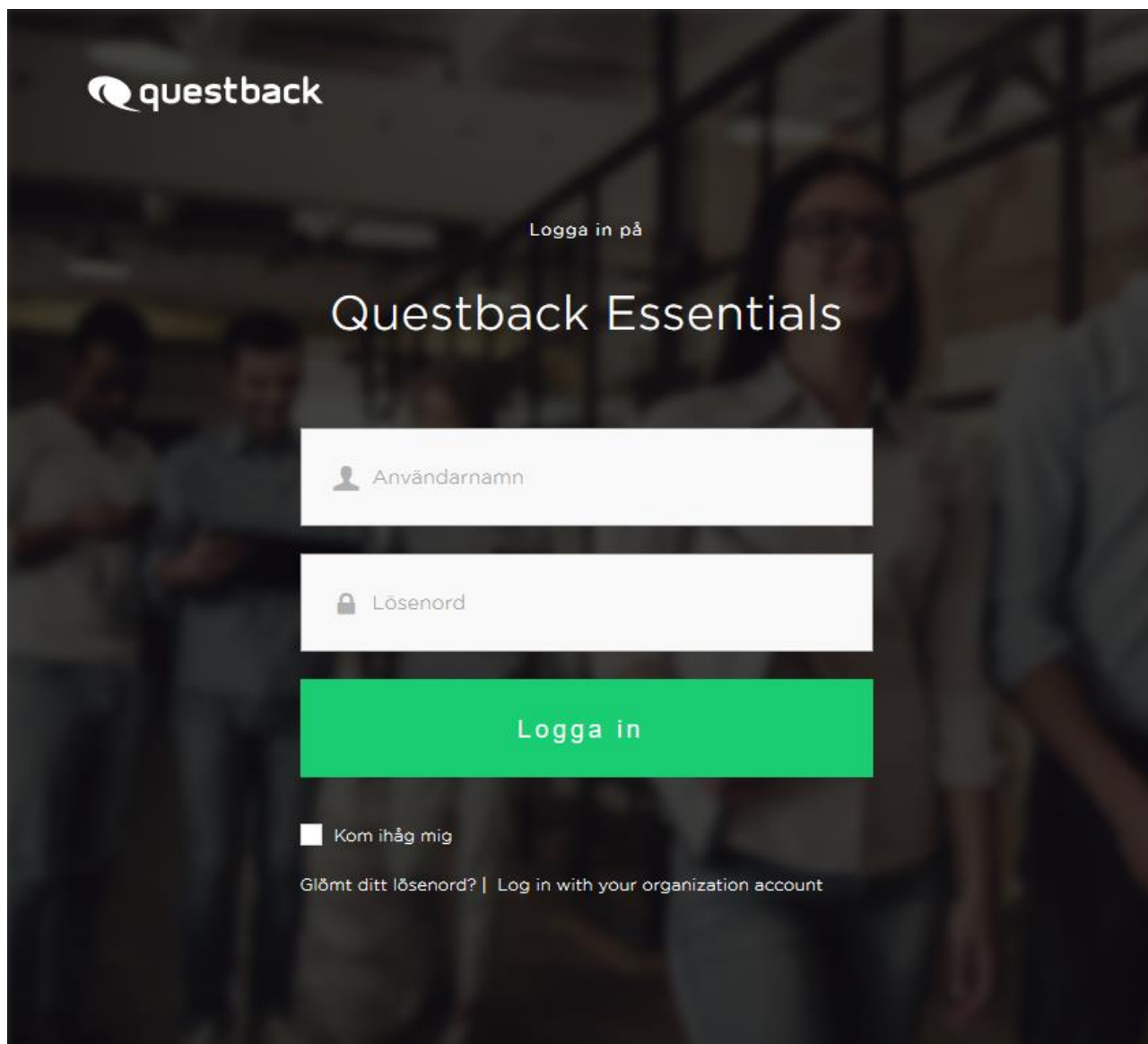
Your metadata typically looks like this:

<https://<yourserver>/FederationMetadata/2007-06/FederationMetadata.xml>

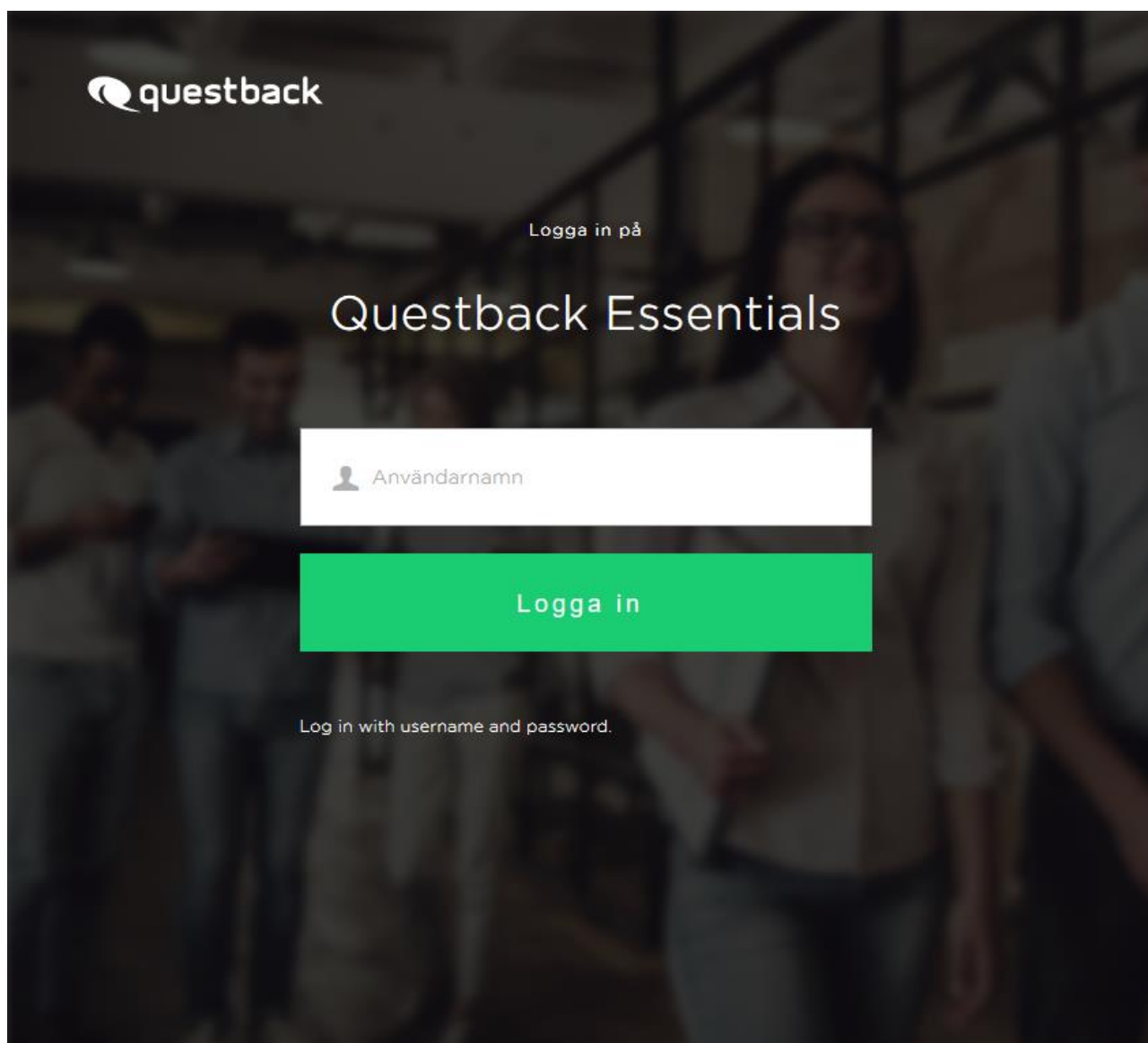
Once that has been added to your Essentials account, the SSO configuration is completed.

Signing in using SSO

Now you are ready to sign in using SSO. On the login page you can click Login with organizational account:



Here you enter your organizational email address and click Login.



On subsequent logins we will remember your last account. You can also contact support to get a direct link to sign in that will bypass this step if that better suits your needs.